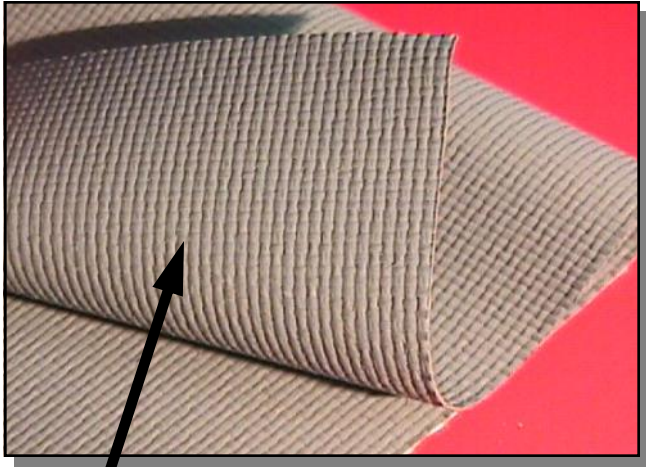




EJ INSULATION JACKETING MATERIALS

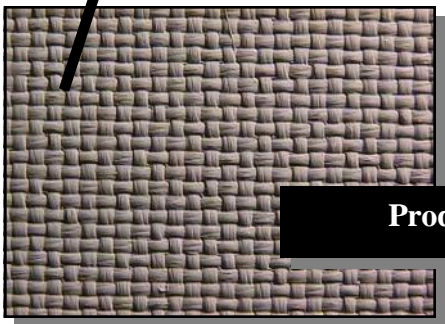
**PTFE/FIBERGLASS COMPOSITES
ENGINEERED FOR REMOVABLE INSULATION SERVICE**

200 Bouchard Street Manchester, NH 03103 PHONE (603) 296-2221 FAX (603)296-2248 www.textilecoated.com



EJ 1400 Gray/Gray Description: This PTFE/ fiberglass composite is designed for challenging insulation jacketing applications.

- ⇒ **Successfully used in insulation jacketing service since 1985.**
- ⇒ **Special coating technology for industrial fabrication.**
- ⇒ **Severe chemical and temperature exposure capabilities.**
- ⇒ **Variations engineered upon request.**
- ⇒ **Easily sewn.**
- ⇒ **Flame retardant.**



Product Close-up



Special Colors Available

EJ 1400 Gray/Gray Properties:

Upper Use Temperature: 600°F (316°C) Continuous Service

Weight: 14.0 oz/yd² (425 g/m²)

Thickness: 0.011" (0.28 mm)

Width: 60" (1524 mm) Nominal

Tensile Strength (Warp): 200 lbs/in (1780 N/50 mm)

Tensile Strength (Fill): 150 lbs/in (1335 N/50 mm)

This information is supplied in good faith and is based on information currently available. **TCI** makes NO WARRANTIES, EITHER EXPRESSED OR IMPLIED, INCLUDING ANY WARRANTIES FOR FITNESS, OR USE FOR A PARTICULAR PURPOSE, OR OF ANY MERCHANTABILITY OR AGAINST INFRINGEMENT OR THE LIKE, unless expressly set forth herein.