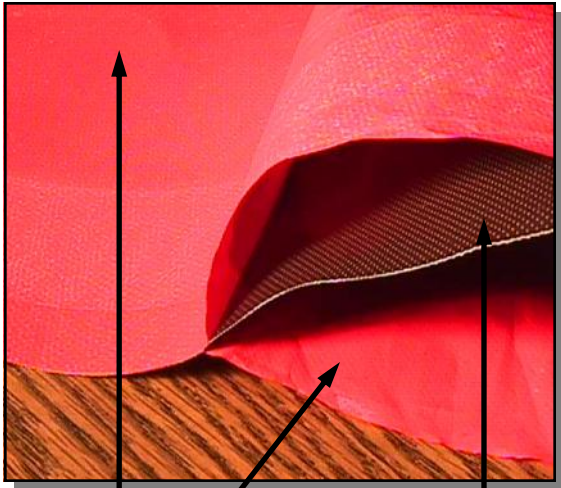




INSULATION JACKETING MATERIALS

LAMINATED PTFE/TEXTILE COMPOSITES
ENGINEERED FOR CORROSIVE REMOVABLE
INSULATION SERVICE

200 Bouchard Street Manchester, NH 03103 PHONE (603) 296-2221 FAX (603)296-2248 www.textilescoated.com



0.003" PTFE Film

PTFE Impregnated
Fiberglass

*(Films are red in this photo to show contrast)

FILMJAC™ 1500/2 Description: This PTFE/ fiberglass composite is designed for harsh, wet insulation jacketing applications. PTFE films are laminated to both sides of the composite for enhanced chemical protection.

- ⇒ **Successfully used in insulation jacketing applications since 1988.**
- ⇒ **Special coating and film technology for industrial fabrication.**
- ⇒ **Severe chemical and temperature exposure capabilities.**
- ⇒ **Many colors are available.**
- ⇒ **Variations engineered upon request.**

FILMJAC™ 1500/2 Properties:

Upper Use Temperature: 600°F (316°C) Continuous Service

Weight: 18 oz/yd² (610 g/m²)

Thickness: 0.015" (0.38 mm)

Width: 58" (1473 mm) Nominal

Tensile Strength (Warp): 200 lbs/in (1787 N/50 mm)

Tensile Strength (Fill): 150 lbs/in (1340 N/50 mm)

FILMJAC™ is a trademark of **TEXTILES COATED INCORPORATED.**

This information is supplied in good faith and is based on information currently available. **TCI** makes NO WARRANTIES, EITHER EXPRESSED OR IMPLIED, INCLUDING ANY WARRANTIES FOR FITNESS, OR USE FOR A PARTICULAR PURPOSE, OR OF ANY MERCHANTABILITY OR AGAINST INFRINGEMENT OR THE LIKE, unless expressly set forth herein.