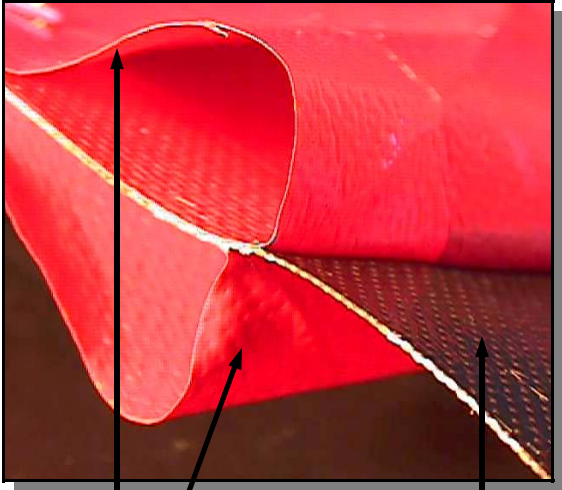


PO Box 532/105 Rt. 101A Amherst, NH 03031 (603) 883-9932 FAX (603) 883-9956 www.textilecoated.com



0.003" PTFE Film

**PTFE Impregnated
Fiberglass**

*(Films are red in this photo to show contrast)

FILMJAC 1900/2 Description: This PTFE/ fiberglass composite is designed for harsh, wet insulation jacketing applications. PTFE films are laminated to both sides of the composite for enhanced chemical protection.

- ⇒ **Successfully used in insulation jacketing applications since 1988.**
- ⇒ **Special coating and film technology for industrial fabrication.**
- ⇒ **Severe chemical and temperature exposure capabilities.**
- ⇒ **Many colors are available.**
- ⇒ **Variations engineered upon request.**

FILMJAC 1900/2 Properties:

| | |
|---------------------------------|---|
| Upper Use Temperature: | 550°F (287°C) Continuous Service |
| Weight: | 22 oz/yd ² (746 g/m ²) |
| Thickness: | 0.018" (0.46 mm) |
| Width: | 58" (1524 mm) Nominal |
| Tensile Strength (Warp): | 275 lbs/in (2457 N/50 mm) |
| Tensile Strength (Fill): | 225 lbs/in (2011 N/50 mm) |

FILMJAC is a trademark of **TEXTILES COATED INCORPORATED**.

This information is supplied in good faith and is based on information currently available. **TCI** makes NO WARRANTIES, EITHER EXPRESSED OR IMPLIED, INCLUDING ANY WARRANTIES FOR FITNESS, OR USE FOR A PARTICULAR PURPOSE, OR OF ANY MERCHANTABILITY OR AGAINST INFRINGEMENT OR THE LIKE, unless expressly set forth herein.