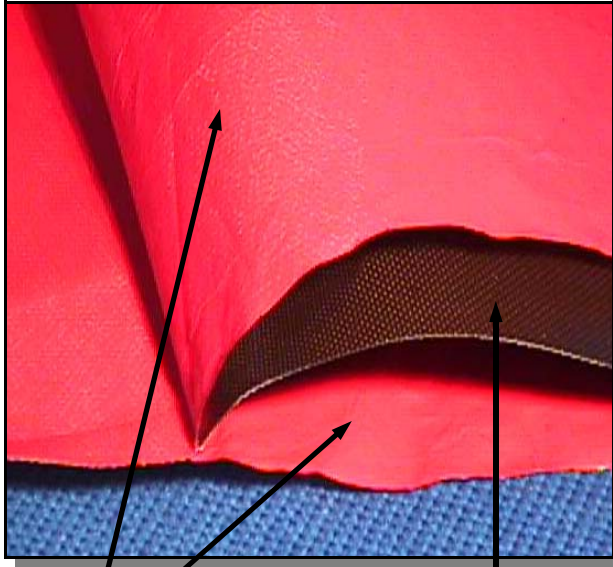


PO Box 532/105 Rt. 101A Amherst, NH 03031 (603) 883-9932 FAX (603) 883-9956 www.textilecoated.com



0.003" PTFE Film

PTFE Impregnated Nomex

*(Films are red in this photo to show contrast)

STF 20/2 Properties:

STF 20/2 Description: This PTFE/Nomex composite is designed for insulation jacketing applications that require the durability of a Nomex fabric in wet environments. PTFE films are laminated to both sides for enhanced chemical protection.

- ⇒ Successfully used in insulation jacketing service since 1988.
 - ⇒ Special coating and film technology for industrial fabrication.
 - ⇒ Severe chemical and temperature exposure capabilities.
 - ⇒ Many colors are available.
 - ⇒ Variations engineered upon request.
- ⇒ **Nomex reinforcement has more capability than fiberglass in wet environments.**

Upper Use Temperature: 500°F (260°C) Continuous Service

Weight: 23 oz/yd² (780 g/m²)

Thickness: 0.022" (0.56 mm)

Width: 54" (1372 mm) Typical

Tensile Strength (Warp): 180 lbs/in (1609 N/50 mm)

Tensile Strength (Fill): 150 lbs/in (1341 N/50 mm)

STF is a trademark of **TEXTILES COATED INCORPORATED**.

This information is supplied in good faith and is based on information currently available. **TCI** makes NO WARRANTIES, EITHER EXPRESSED OR IMPLIED, INCLUDING ANY WARRANTIES FOR FITNESS, OR USE FOR A PARTICULAR PURPOSE, OR OF ANY MERCHANTABILITY OR AGAINST INFRINGEMENT OR THE LIKE, unless expressly set forth herein.