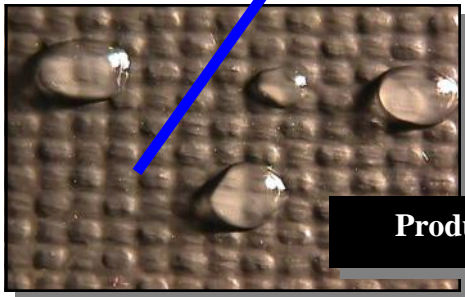
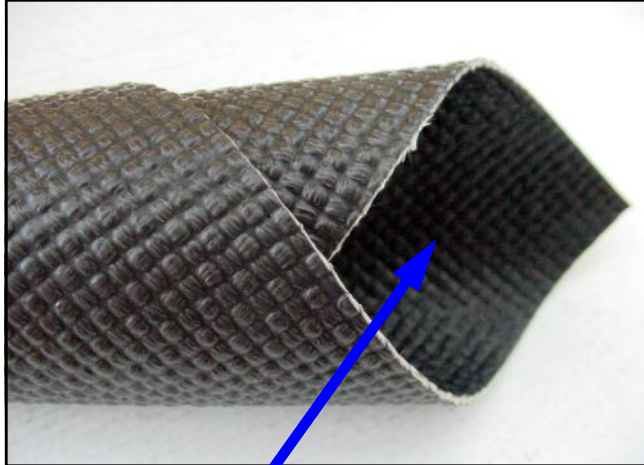


**TEXTFILM™ EXPANSION JOINT MATERIALS**

**LAMINATED PTFE/FIBERGLASS COMPOSITES  
ENGINEERED FOR DRY GAS SEAL SERVICE**

200 Bouchard Street Manchester, NH 03103 PHONE: (603) 296-2221 FAX: (603) 296-2248 [www.textilecoated.com](http://www.textilecoated.com)



**Product Close-up**

**TEXTFILM™ 1405 Description:** TEXTFILM™ 1405 is engineered for dry flue gas service. A 0.005" (0.13 mm) PTFE barrier is laminated to a PTFE/fiberglass composite to produce a rugged material for non-metallic compensator applications.

- ⇒ **ZERO POROSITY.**
- ⇒ **Proven coating and lamination technology for industrial fabrication.**
- ⇒ **Severe chemical and temperature exposure capabilities.**
- ⇒ **Variations engineered upon request.**



**Many Colors Available**

**TEXTFILM™ 1405 Properties:**

*Upper Use Temperature:* 600°F (316°C) Continuous Service

*Weight:* 53 oz/yd<sup>2</sup> (1802 g/m<sup>2</sup>)

*Thickness:* 0.045" (1.14 mm)

*Width:* 58" (1473 mm) Nominal

*Tensile Strength (Warp):* 1200 lbs/in (10724 N/50 mm)

*Tensile Strength (Fill):* 1200 lbs/in (10724 N/50 mm)

**TEXTFILM™** is a trademark of **TEXTILES COATED INCORPORATED.**

This information is supplied in good faith and is based on information currently available. TCI makes NO WARRANTIES, EITHER EXPRESSED OR IMPLIED, INCLUDING ANY WARRANTIES FOR FITNESS, OR USE FOR A PARTICULAR PURPOSE, OR OF ANY MERCHANTABILITY OR AGAINST INFRINGEMENT OR THE LIKE, unless expressly set forth herein.