



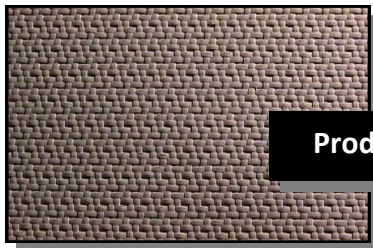
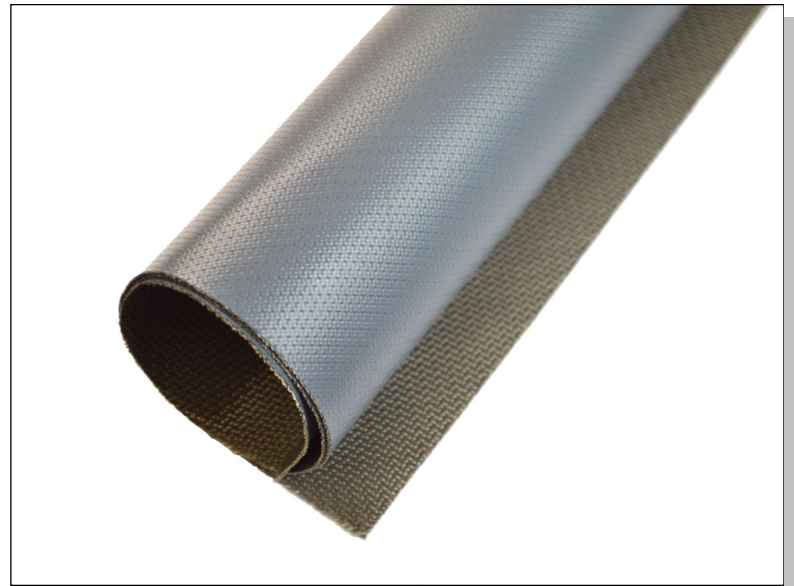
# EJ™ 1650 Softflex Insulation Jacketing Material

PTFE/FIBERGLASS COMPOSITES ENGINEERED FOR REMOVABLE INSULATION SERVICE

## EJ™ 1650 Softflex Insulation Jacketing:

This flexible PTFE/fiberglass composite is engineered for challenging insulation jacketing applications.

- **Successfully used in insulation jacketing service since 1985.**
- **Standard color gray; special colors available upon request**
- **Severe chemical and temperature exposure capabilities**



**Product Close-up**

- **Special coating technology for industrial fabrication**
- **Easily sewn**
- **Flame retardant**

## EJ™ 1650 SOFTFLEX PROPERTIES

<b>Upper Use Temperature:</b>	600°F (316°C) Continuous Service
<b>Overall Weight:</b>	16.5 oz/yd <sup>2</sup> (560 g/m <sup>2</sup> )
<b>Thickness:</b>	0.014 inches (0.36 mm)
<b>Width:</b>	60 inches (1524 mm) Nominal
<b>Tensile Strength (Warp):</b>	400 lbs/inch (3503 N/50 mm)
<b>Tensile Strength (Fill):</b>	150 lbs/inch (1313 N/50 mm)

**TCI's test protocol includes or may include ASTM Standards C1695, D3776, D751, and D6413.**

**This material does not contain an illegal or detectable level of PFOA or PFOS in parts per trillion.**

EJ™ is a trademark of TCI (Textiles Coated International). This information is supplied in good faith and is based on information currently available. TCI makes NO WARRANTIES, EITHER EXPRESSED OR IMPLIED, INCLUDING ANY WARRANTIES FOR FITNESS, OR USE FOR A PARTICULAR PURPOSE, OR OF ANY MERCHANTABILITY OR AGAINST INFRINGEMENT OR THE LIKE, unless expressly set forth herein.

TEXTILES COATED INTERNATIONAL | Manufacturer of High-Performance Fluoropolymer Films, Laminates, and Composites

200 Bouchard Street, Manchester, NH 03103 USA PHONE: (603) 296-2221 FAX: (603) 296-2248 www.textilescoated.com