



Manufacturer of High-Performance Fluoropolymer Films, Laminates, and Composites

Film-Assisted Molding for Semiconductor Applications

TCI manufactures high-precision fluoropolymer films engineered for one of the industry's most demanding environments - semiconductor cleanroom applications. **Our advanced manufacturing capabilities enable tight tolerances, exceptional dimensional stability, and consistent material performance across critical applications.**

Cleanliness and process control are maintained throughout every stage of production, converting, and packaging to support contamination-sensitive environments. In-line visual inspection systems continuously monitor key parameters in real time, enabling immediate detection and prevention of defects to ensure consistent product quality.

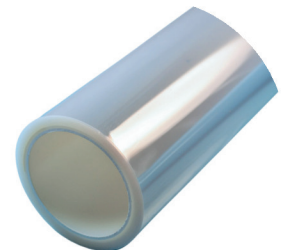
Supported by an experienced Engineering and R&D team, TCI also collaborates with customers on custom-designed solutions and application-specific projects, helping develop materials and constructions tailored to unique technical requirements.



TCI offers two specialized film solutions tailored for this application:

PFA Films

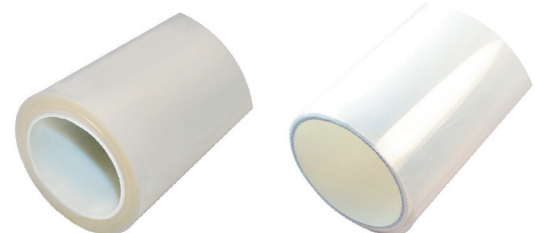
TCI uses a melt extrusion casting process to produce PFA films/foils from Perfluoroalcoxy (PFA) resin. **TCI's PFA films offer all the benefits of fully fluorinated films, such as a large continuous use temperature range (-425 to 500°F or -254 to 260°C), high chemical and stress crack resistance, and superior dielectric performance. These films have excellent light transmission and clarity and are free of plasticizers, processing aids, or additives.** PFA foils can be heat-sealed, thermoformed, laminated to various substrates, and used as an excellent hot-melt adhesive.



Glossy

ETFE Films

TCI's ETFE films/foils are produced from ethylene and tetrafluoroethylene co-polymer resin using a melt extrusion casting process. **ETFE films have excellent release properties, low permeability to liquids, gases, moisture, and organic vapors with a high elongation and tear resistance.** ETFE foils can be heat-sealed, thermoformed, and laminated to various substrates.



Matte and Glossy options available

6 George Ave Londonderry, NH 03053 USA

+1 (603) 296-2221

inquiry@textilecoated.com

textilecoated.com

Textiles Coated International