

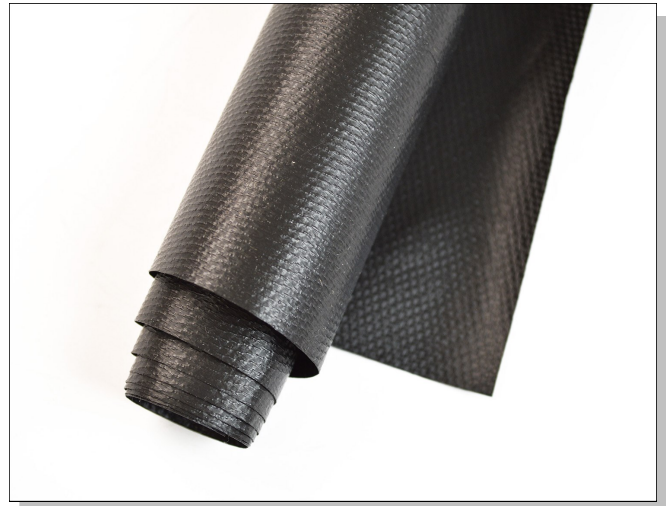


# CrossFilm™ 2105 Expansion Joint Material

100% PTFE CORROSION LINER ENGINEERED FOR CORROSIVE CONDITIONS

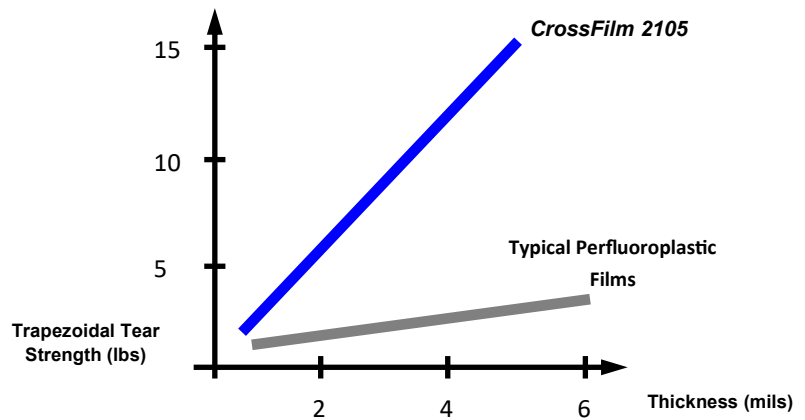
## CrossFilm™ 2105 Expansion Joint Material:

CrossFilm™ 2105 Expansion Joint Material is an exceptionally thin, high strength, PTFE laminate that has been targeted for challenging thermo/chemical applications, such as the gas seal requirement in non-metallic flue duct expansion joints. It is made up solely of PTFE, which means the material is, essentially, chemically inert. The product can operate in temperatures as high as 600°F (316°C). The nonporous membrane can be readily fabricated in many shapes using heat sealing techniques. CrossFilm™ 2105, which is available in many colors, can be provided in a conductive/anti-static condition.



CrossFilm™ 2105: 750,000 cycles

CrossFilm™  
Tear Strength vs. Thickness



## CROSSFILM™ 2105 PROPERTIES

<b>Upper Use Temperature:</b>	600°F (316°C) Continuous Service
<b>Overall Weight:</b>	8.0 oz/yd <sup>2</sup> (272 g/m <sup>2</sup> )
<b>Thickness:</b>	0.005 inches (0.13 mm)
<b>Width:</b>	Up to 60 inches (1524 mm)
<b>Tensile Strength:</b>	30 lbs/inch (263 N/50 mm)
<b>Tear Strength:</b>	28 lbs (124.5 N)

CrossFilm™ is a trademark of TEXTILES COATED INTERNATIONAL. Patents worldwide This information is supplied in good faith is based on information currently available. TCI makes NO WARRANTIES, EITHER EXPRESSED OR IMPLIED, INCLUDING ANY WARRANTIES FOR FITNESS, OR USE FOR A PARTICULAR PURPOSE, OR ANY MERCHANTABILITY OR AGAINST INFRINGEMENT OR THE LIKE, unless expressly set forth herein.

TEXTILES COATED INTERNATIONAL | Manufacturer of High-Performance Fluoropolymer Films, Laminates, and Composites

200 Bouchard Street, Manchester, NH 03103 USA PHONE: (603) 296-2221 FAX: (603) 296-2248 www.textilescoated.com