



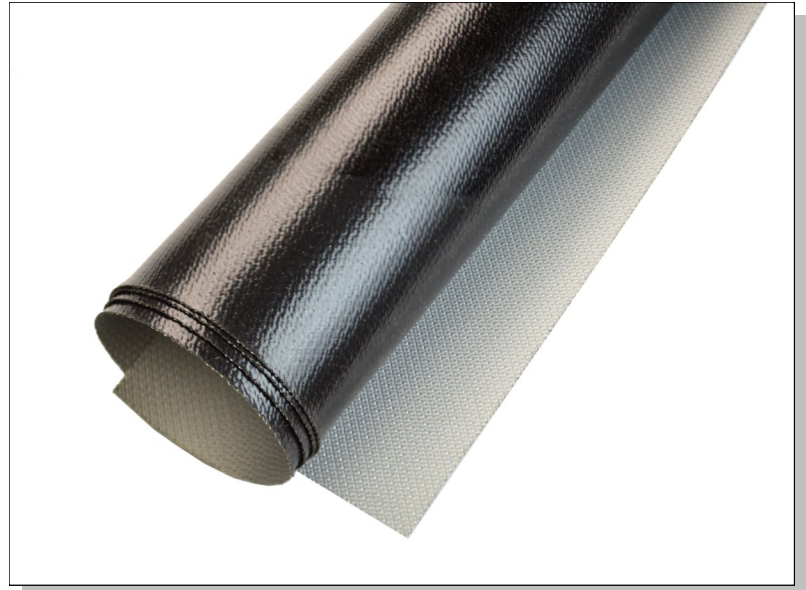
SILTUF™ 2000 Insulation Jacketing Material

SILICONE/FIBERGLASS COMPOSITES ENGINEERED FOR REMOVABLE INSULATION SERVICE

SILTUF™ 2000 Description:

This silicone/fiberglass composite contains a thick, rugged, coating engineered specifically for removable pads, flanges and valve covers.

- **Successfully used in insulation jacketing service since 1985**
- **Incorporates SILTUF™ coating technology**
- **Severe chemical and temperature exposure capabilities**
- **Flame-resistant**



- **Easily sewn**
- **Product variations engineered upon request**

SILTUF™ 2000 PROPERTIES

Upper Use Temperature:	480°F (249°C) Continuous Service
Weight:	20.0 oz/yd ² (680 g/m ²)
Thickness:	0.018" (0.46 mm)
Width:	60" (1524 mm) Typical
Tensile Strength (Warp):	370 lbs/in (3240 N/50 mm)
Tensile Strength (Fill):	310 lbs/in (2714 N/50 mm)

SILTUF™ is a trademark of TEXTILES COATED INCORPORATED. This information is supplied in good faith and is based on information currently available. TCI makes NO WARRANTIES, EITHER EXPRESSED OR IMPLIED, INCLUDING ANY WARRANTIES FOR FITNESS, OR USE FOR A PARTICULAR PURPOSE, OR OF ANY MERCHANTABILITY OR AGAINST INFRINGEMENT OR THE LIKE, unless expressly set forth herein.

TEXTILES COATED INTERNATIONAL | Manufacturer of High-Performance Fluoropolymer Films, Laminates, and Composites

200 Bouchard Street, Manchester, NH 03103 USA PHONE: (603) 296-2221 FAX: (603) 296-2248 www.textilescoated.com