

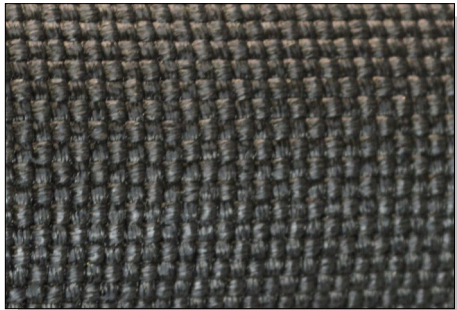


# TEXFILM™ 609 Expansion Joint Material

LAMINATED PTFE/FIBERGLASS COMPOSITES ENGINEERED FOR DRY FLUE GAS SEAL SERVICE

### TEXFILM™ 609 Description:

TEXFILM™ 609 is engineered for dry, gas seal service. A 0.009" (0.23 mm) 100% PTFE CrossFilm™ is laminated to the TEXCOAT™ 600 product.



- **TEXFILM™ has been successfully used in expansion joint service since 1990**
- **Proven coating and lamination technology for industrial fabrication**
- **Severe chemical and temperature exposure capabilities**
- **Variations engineered upon request**

## TEXFILM™ 609 PROPERTIES

<b>Materials of Construction:</b>	Woven Fiberglass; Fluoropolymer Resins
<b>Upper Use Temperature:</b>	600°F (316°C) Continuous
<b>Weight:</b>	39 oz/yd <sup>2</sup> (1322 g/m <sup>2</sup> )
<b>Thickness:</b>	0.033" (0.84 mm)
<b>Width:</b>	60" (1524 mm)
<b>Tensile Strength (Warp):</b>	500 lbs/in (4378 N/50 mm)
<b>Tensile Strength (Fill):</b>	500 lbs/in (4378 N/50 mm)

TEXFILM™ and CrossFilm™ are trademarks of Textiles Coated International. This information is supplied in good faith and is based on information currently available. TCI makes NO WARRANTIES, EITHER EXPRESSED OR IMPLIED, INCLUDING ANY WARRANTIES FOR FITNESS, OR USE FOR A PARTICULAR PURPOSE, OR OF ANY MERCHANTABILITY OR AGAINST INFRINGEMENT OR THE LIKE, unless expressly set forth herein.

TEXTILES COATED INTERNATIONAL | Manufacturer of High Performance PTFE Composites and Laminates

200 Bouchard Street, Manchester, NH 03103    PHONE: (603) 296-2221    FAX: (603) 296-2248    www.textilecoated.com